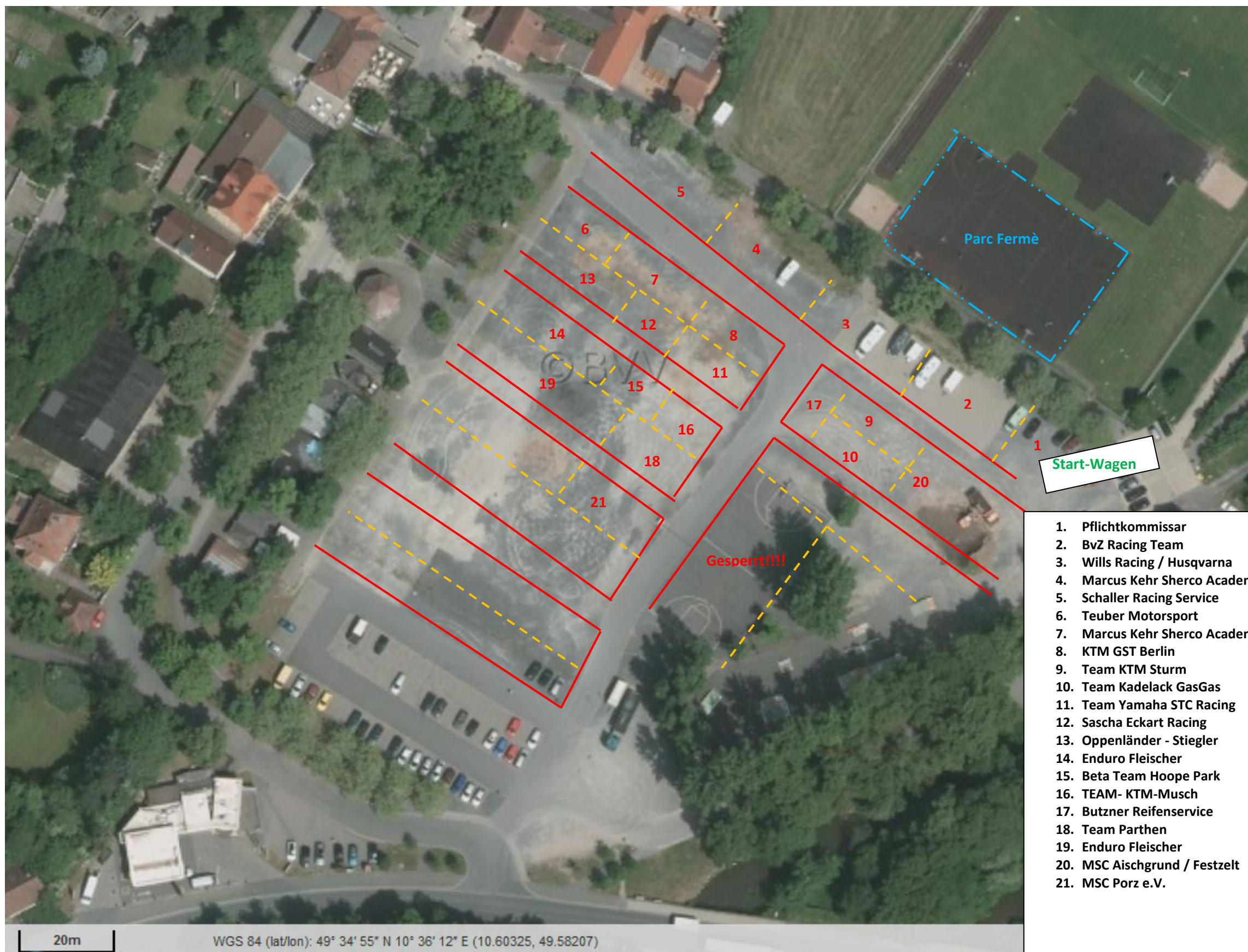




### Fahrerlagereinteilung Neustadt an der Aisch / Festplatz



- |     |                            |      |       |
|-----|----------------------------|------|-------|
| 1.  | Pflichtkommissar           |      |       |
| 2.  | BvZ Racing Team            | 20 m | x 6 m |
| 3.  | Wills Racing / Husqvarna   | 20 m | x 6 m |
| 4.  | Marcus Kehr Sherco Academy | 20 m | x 6 m |
| 5.  | Schaller Racing Service    | 20 m | x 6 m |
| 6.  | Teuber Motorsport          | 20 m | x 6 m |
| 7.  | Marcus Kehr Sherco Academy | 20 m | x 6 m |
| 8.  | KTM GST Berlin             | 20 m | x 6 m |
| 9.  | Team KTM Sturm             | 20 m | x 6 m |
| 10. | Team Kadelack GasGas       | 20 m | x 6 m |
| 11. | Team Yamaha STC Racing     | 10 m | x 6 m |
| 12. | Sascha Eckart Racing       | 10 m | x 6 m |
| 13. | Oppenländer - Stiegler     | 20 m | x 6 m |
| 14. | Enduro Fleischer           | 20 m | x 6 m |
| 15. | Beta Team Hoop Park        | 20 m | x 6 m |
| 16. | TEAM- KTM-Musch            | 20 m | x 6 m |
| 17. | Butzner Reifenservice      | 20 m | x 6 m |
| 18. | Team Parthen               | 20 m | x 6 m |
| 19. | Enduro Fleischer           | 25 m | x 6 m |
| 20. | MSC Aischgrund / Festzelt  |      |       |
| 21. | MSC Porz e.V.              | 20 m | x 6 m |